




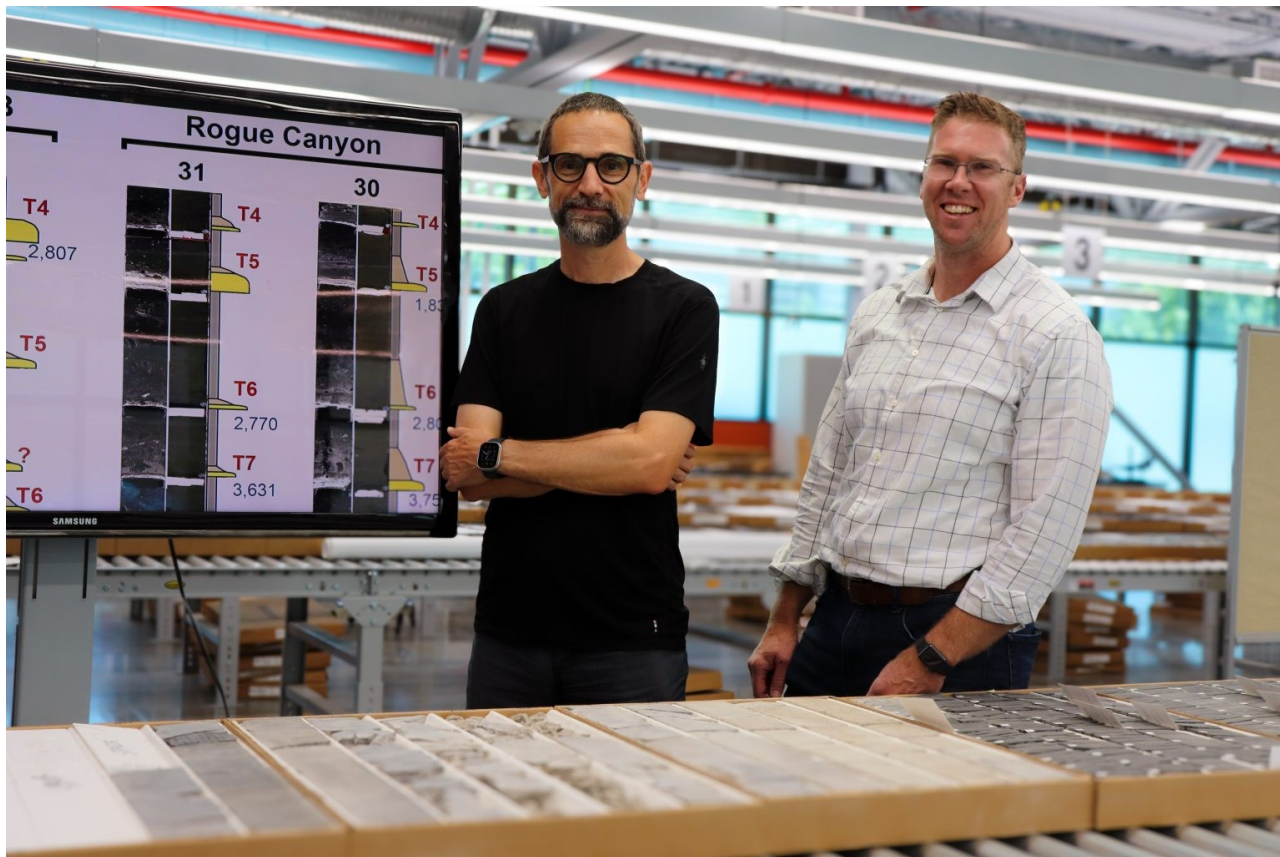
Algorithm Raises New Questions About Cascadia Earthquake Record

AUGUST 27, 2024

 | [Twitter \(https://twitter.com/intent/tweet?text=Algorithm%20Raises%20New%20Questions%20About%20Cascadia%20Earthquake%20Record&url=https%3A%2F%2Fwww.jsg.utexas.edu/news/2024/08/algorithm-raises-new-questions-about-cascadia-earthquake-record%2F\)](https://twitter.com/intent/tweet?text=Algorithm%20Raises%20New%20Questions%20About%20Cascadia%20Earthquake%20Record&url=https%3A%2F%2Fwww.jsg.utexas.edu/news/2024/08/algorithm-raises-new-questions-about-cascadia-earthquake-record%2F)

 | [Facebook \(https://www.facebook.com/sharer/sharer.php?u=https%3A%2F%2Fwww.jsg.utexas.edu%2Fnews%2F2024%2F08%2Falgorithm-raises-new-questions-about-cascadia-earthquake-record%2F\)](https://www.facebook.com/sharer/sharer.php?u=https%3A%2F%2Fwww.jsg.utexas.edu%2Fnews%2F2024%2F08%2Falgorithm-raises-new-questions-about-cascadia-earthquake-record%2F)

 | [LinkedIn \(https://www.linkedin.com/shareArticle?mini=true&url=https%3A%2F%2Fwww.jsg.utexas.edu%2Fnews%2F2024%2F08%2Falgorithm-raises-new-questions-about-cascadia-earthquake-record%2F&title=Algorithm%20Raises%20New%20Questions%20About%20Cascadia%20Earthquake%20Record\)](https://www.linkedin.com/shareArticle?mini=true&url=https%3A%2F%2Fwww.jsg.utexas.edu%2Fnews%2F2024%2F08%2Falgorithm-raises-new-questions-about-cascadia-earthquake-record%2F&title=Algorithm%20Raises%20New%20Questions%20About%20Cascadia%20Earthquake%20Record)



(https://www.jsg.utexas.edu/news/files/zoltan-and-jake_core-viewing-lab-scaled.jpg)

Research Professors Zoltán Sylvester (left) and Jacob Covault in the core viewing facility at The University of Texas at Austin's Bureau of Economic Geology. An algorithm they developed for correlating turbidites in geologic cores is raising questions about the earthquake record of Cascadia. Examples of turbidites from Cascadia are shown on the screen behind them. Credit: UT Jackson School of Geosciences.

The Cascadia subduction zone in the Pacific Northwest has a history of producing powerful and destructive earthquakes that have sunk forests and spawned tsunamis that reached all the way to the shores of Japan.

The most recent great earthquake was in 1700. But it probably won't be the last. And the area that stands to be affected is now bustling metropolises that are home to millions of people.

Figuring out the frequency of earthquakes – and when the next “big one” will happen – is an active scientific question that involves looking for signs of past earthquakes in the geologic record in the form of shaken up rocks, sediment and landscapes.

However, a study by scientists at The University of Texas at Austin and collaborators is calling into question the reliability of an earthquake record that covers thousands of years – a type of geologic



(<https://www.jsg.utexas.edu/news/files/>)

deposit called a turbidite that's found in the [cascadiamap_release.jpg](#)
strata of the seafloor.

The Cascadia Subduction Zone is located just offshore of the Pacific Northwest of North America and has a history of generating powerful earthquakes. Credit: National Oceanic and Atmospheric Administration

The researchers analyzed a selection of turbidite layers from the Cascadia subduction

zone dating back about 12,000 years ago with an algorithm that assessed how well turbidite layers correlated with one another.

They found that, in most cases, the correlation between the turbidite samples was no better than random. Since turbidites can be caused by a range of phenomena, and not just earthquakes, the results suggest that the turbidite record's connection to past earthquakes is more uncertain than previously thought.

"We would like everyone citing the intervals of Cascadia subduction earthquakes to understand that these timelines are being questioned by this study," said Joan Gomborg, a research geophysicist at the U.S. Geological Survey and study co-author. "It's important to conduct further research to refine these intervals. What we do know is that Cascadia was seismically active in the past and will be in the future, so ultimately, people need to be prepared."

The results don't necessarily change the estimated earthquake frequency in Cascadia, which is about every 500 years, said the researchers. The current frequency estimate is based on a range of data and interpretations, not just the turbidites analyzed in this study. However, the results do highlight the need for more research on turbidite layers, specifically, and how they relate to each other and large earthquakes.

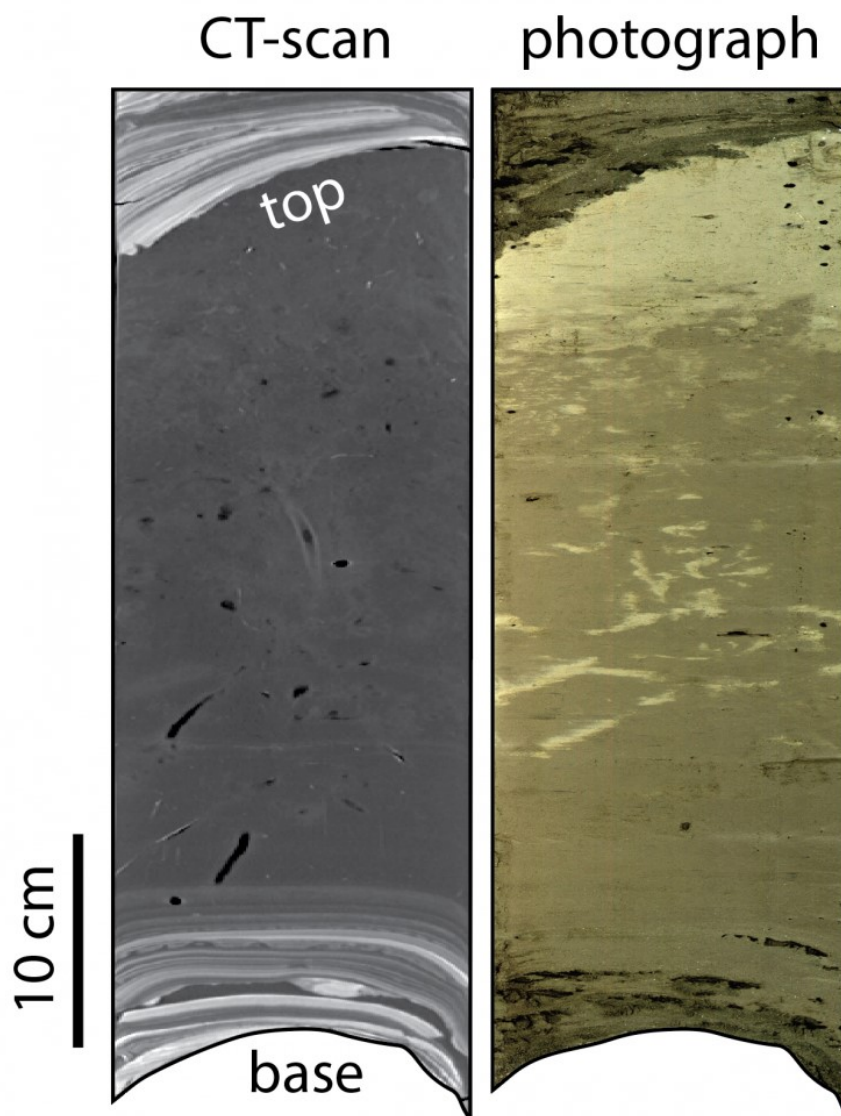
Co-author Jacob Covault, a research professor at the UT Jackson School of Geosciences, said the algorithm offers a quantitative tool that provides a replicable method for interpreting ancient earthquake record, which are usually based on more qualitative descriptions of the geology and their potential associations.

"This tool provides a repeatable result, so everybody can see the same thing," said Covault, the co-principal investigator of the Quantitative Clastics lab at the Jackson School's Bureau of Economic Geology. "You can potentially argue with that result, but at least you have a baseline, an approach that is reproducible."

The results were published in the journal *GSA Bulletin* (<https://pubs.geoscienceworld.org/gsa/gsabulletin/article/doi/10.1130/B37343.1/645040/Turbidite-correlation-for-paleoseismology>). The study includes researchers from the USGS, Stanford University and the Alaska Division of Geological & Geophysical Surveys.

Turbidites are the remnants of underwater landslides. They're made of sediments that settled back down to the seafloor after being flung into the water by the turbulent motion of sediment rushing

across the ocean floor. The sediment in these layers have a distinctive gradation, with coarser grains at the bottom and finer ones at the top.



(https://www.jsg.utexas.edu/news/files/turbidite_example.png)

A photograph (right) and CT scan of a turbidite layer in a geologic core sample collected during a scientific cruise studying the geology near the Cascadia Subduction Zone. The subduction zone can create large, damaging earthquakes. Researchers are interested in clarifying how the turbidite layers relate to the past earthquake record. Credit: Zoltan Sylvester using data from Goldfinger et al.

But there's more than one way to make a turbidite layer. Earthquakes can cause landslides when they shake up the seafloor. But so can storms, floods and a range of other natural phenomena, albeit on a geographic smaller scale.

Currently, connecting turbidites to past earthquakes usually involves finding them in geologic cores taken from the seafloor. If a turbidite shows up in roughly the same spot in multiple samples across a relatively large area, it's counted as a remnant of a past earthquake, according to the researchers.

Although carbon dating samples can help narrow down timing, there's still a lot of uncertainty in interpreting if samples that appear at about the same time and place are connected by the same event.

Getting a better handle on how different turbidite samples relate to one another inspired the researchers to apply a more quantitative method – an algorithm called “dynamic time warping” – to the turbidite data. The algorithmic method dates back to the 1970s and has a wide range of applications, from voice recognition to smoothing out graphics in dynamic VR environments.

This is the first time it has been applied to analyzing turbidites, said co-author Zoltán Sylvester, a research professor at the Jackson School and co-principal investigator of the Quantitative Clastics Lab, who led the adaption of the algorithm for analyzing turbidites.

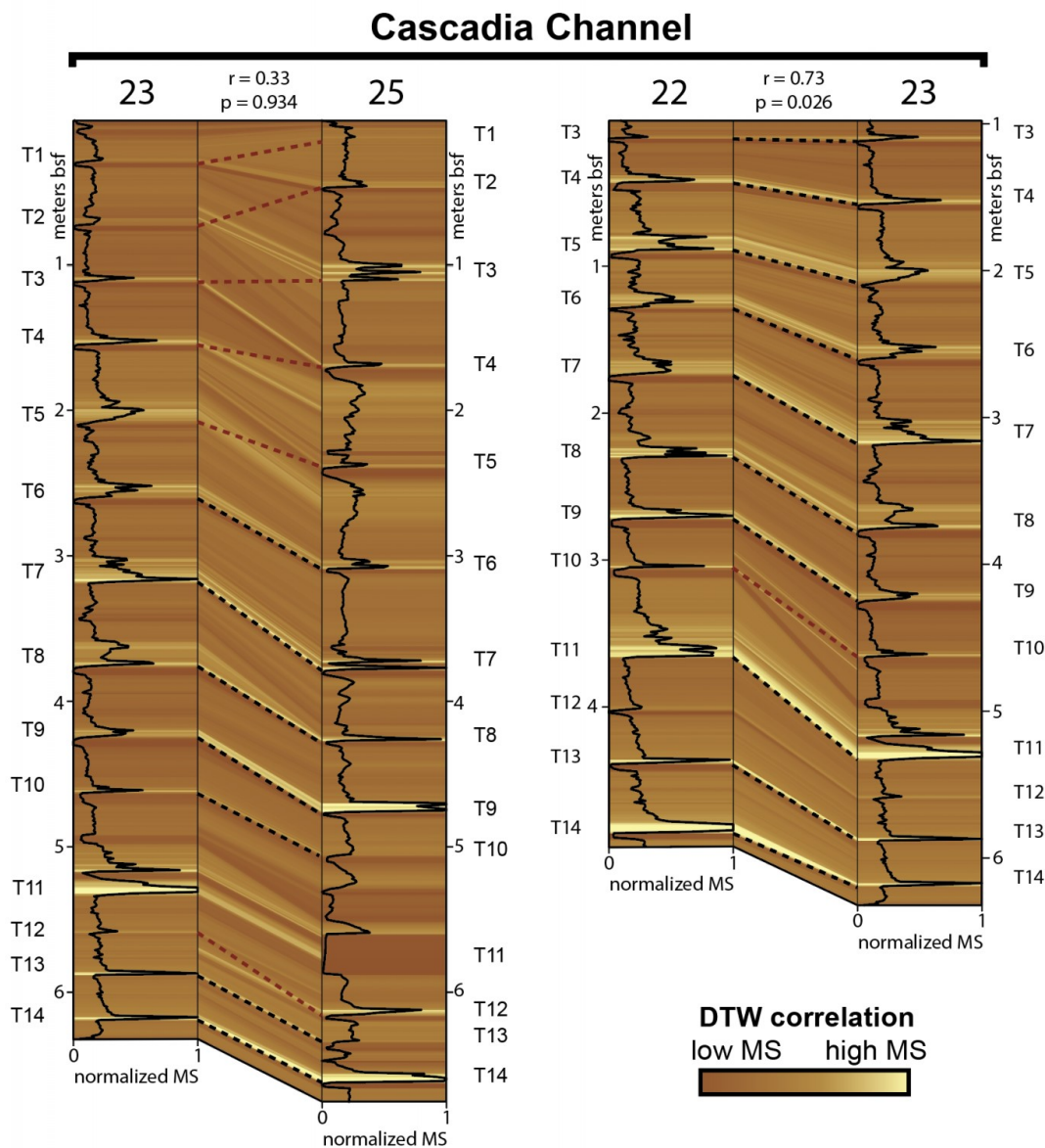
“This algorithm has been a key component of a lot of the projects I have worked on,” said Sylvester. “But it’s still very much underused in the geosciences.”

The algorithm detects similarity between two samples that may vary over time, and determines how closely the data between them matches.

For voice recognition software, that means recognizing key words even though they might be spoken at different speeds or pitches. For the turbidites, it involves recognizing shared magnetic properties between different turbidite samples that may look different from location to location despite originating from the same event.

“Correlating turbidites is no simple task,” said co-author Nora Nieminski, the coastal hazards program manager for the Alaska Division of Geological & Geophysical Surveys. “Turbidites commonly demonstrate significant lateral variability that reflect their variable flow dynamics. Therefore, it is not expected for turbidites to preserve the same depositional character over great distances, or even small distances in many cases, particularly along active margins like Cascadia or across various depositional environments.”

The researchers also subjected the correlations produced by the algorithm to another level of scrutiny. They compared the results to correlation data calculated using synthetic data made by comparing 10,000 pairs of random turbidite layers. This synthetic comparison served as a control against coincidental matches in the actual samples.



(https://www.jsg.utexas.edu/news/files/correlation_example.png)

A figure comparing the results of earlier turbidite correlation research to results calculated by an algorithm developed at The University of Texas at Austin. Black dashed lines indicate similar research results. Red dashed lines are different results. Credit: Zoltan Sylvester.

The researchers applied their technique to magnetic susceptibility logs for turbidite layers in nine geologic cores that were collected during a scientific cruise in 1999. They found that in most cases, the connection between turbidite layers that had been previously correlated was no better than random. The only exception to this trend was for turbidite layers that were relatively close together – no more than about 15 miles apart.

The researchers emphasize that the algorithm is just one way of analyzing turbidities, and that the inclusion of other data could change the degree of correlation between the cores one way or another. But according to these results, the presence of turbidities at the same time and general area in the geologic record is not enough to definitively connect them to one another.

And although algorithms and machine learning approaches can help with that task, it's up to geoscientists to interpret the results and see where the research leads.

“We are here for answering questions not just applying the tool,” Sylvester said. “But at the same time, if you are doing this kind of work, then it forces you to think very carefully.”

For more information, contact: [Anton Caputo \(mailto:anton.caputo@jsug.utexas.edu\)](mailto:anton.caputo@jsug.utexas.edu), Jackson School of Geosciences, 512-232-9623; [Monica Kortsha \(mailto:mkortsha@jsug.utexas.edu\)](mailto:mkortsha@jsug.utexas.edu), Jackson School of Geosciences, 512-471-2241; [Constantino Panagopulos \(mailto:costa@ig.utexas.edu\)](mailto:costa@ig.utexas.edu), University of Texas Institute for Geophysics.

Tags: [Bureau of Economic Geology \(https://www.jsug.utexas.edu/news/tag/bureau-of-economic-geology/\)](https://www.jsug.utexas.edu/news/tag/bureau-of-economic-geology/), [Cascadia \(https://www.jsug.utexas.edu/news/tag/cascadia/\)](https://www.jsug.utexas.edu/news/tag/cascadia/), [Earthquake \(https://www.jsug.utexas.edu/news/tag/earthquake/\)](https://www.jsug.utexas.edu/news/tag/earthquake/), [Jake Covault \(https://www.jsug.utexas.edu/news/tag/jake-covault/\)](https://www.jsug.utexas.edu/news/tag/jake-covault/), [Zoltan Sylvester \(https://www.jsug.utexas.edu/news/tag/zoltan-sylvester/\)](https://www.jsug.utexas.edu/news/tag/zoltan-sylvester/)

[News \(https://www.jsug.utexas.edu/news\)](https://www.jsug.utexas.edu/news)

[Media Releases \(https://www.jsug.utexas.edu/news/releases/\)](https://www.jsug.utexas.edu/news/releases/)

[Dean’s Office \(https://www.jsug.utexas.edu/news/deans-office/\)](https://www.jsug.utexas.edu/news/deans-office/)

[Blogs \(https://www.jsug.utexas.edu/news/blogs/\)](https://www.jsug.utexas.edu/news/blogs/)

[In the News \(https://www.jsug.utexas.edu/news/in-the-news/\)](https://www.jsug.utexas.edu/news/in-the-news/)

[Scientist Profiles \(https://www.jsug.utexas.edu/news/scientist-profiles/\)](https://www.jsug.utexas.edu/news/scientist-profiles/)

[Newsletter \(https://www.jsug.utexas.edu/news/newsletter/\)](https://www.jsug.utexas.edu/news/newsletter/)

[The Geoscientist \(https://www.jsug.utexas.edu/news/the-geoscientist/\)](https://www.jsug.utexas.edu/news/the-geoscientist/)

[Texas Geosciences \(https://www.jsug.utexas.edu/news/texas-geosciences/\)](https://www.jsug.utexas.edu/news/texas-geosciences/)

[Advancing Excellence \(https://www.jsug.utexas.edu/news/advancing-excellence/\)](https://www.jsug.utexas.edu/news/advancing-excellence/)


[Media Contacts \(https://www.jsug.utexas.edu/about/offices/communications/\)](https://www.jsug.utexas.edu/about/offices/communications/)

Media Releases

Select Month

Twitter

Posts from @txgeosciences



Nothing to see here - yet

When they post, their posts will show up here.

View on X

[< OLDER POST \(HTTPS://WWW.JSG.UTEXAS.EDU/NEWS/2024/08/SHUJUAN-MAO-ASSISTANT-PROFESSOR/\)](https://www.jsg.utexas.edu/news/2024/08/shujuan-mao-assistant-professor/)

[NEWER POST >](#)



TEXAS Geosciences

The University of Texas at Austin
Jackson School of Geosciences



Mailing Address

Jackson School of Geosciences
2305 Speedway Stop C1160
Austin, TX 78712-1692

Phone

(512) 471-6048

[SUPPORT JSG](#) > [\(/ALUMNI/SUPPORT/WAYS-TO-GIVE/\)](#)

Departments & Units

[Department of Earth and Planetary Sciences \(https://eps.jsg.utexas.edu/\)](https://eps.jsg.utexas.edu/)

[Bureau of Economic Geology \(https://beg.utexas.edu/\)](https://beg.utexas.edu/)

[Institute for Geophysics \(https://ig.utexas.edu/\)](https://ig.utexas.edu/)

Administration & Offices

[College Leadership \(/about/leadership/\)](/about/leadership/)

[Career Services \(/careers/\)](/careers/)

[Business Services \(/about/offices/business-services\)](/about/offices/business-services/)

[Development and Alumni Relations \(/alumni/\)](/alumni/)

[Office of Communications \(/about/offices/communications/\)](/about/offices/communications/)

[Information Technology Office \(/about/offices/information-technology/\)](/about/offices/information-technology/)

Helpful Links

[UT Austin \(http://www.utexas.edu\)](http://www.utexas.edu)

[UT Direct \(https://utdirect.utexas.edu\)](https://utdirect.utexas.edu)



[Emergency Information \(http://emergency.utexas.edu\)](http://emergency.utexas.edu)

[IT Help \(/help\)](/help)

[JSG Directory \(/people\)](/people)

[JSG Profiles \(https://apps.jsg.utexas.edu/profiles\)](https://apps.jsg.utexas.edu/profiles)

[Contact Us \(/about/contacts/\)](/about/contacts/)

f (<https://www.facebook.com/UTJSG>) 
(<https://twitter.com/txgeosciences>) 
(<https://www.youtube.com/user/JSGUTAUSTIN>) @ (<https://www.instagram.com/txgeosciences/>)

© 2024 Jackson School of Geosciences,
The University of Texas at Austin

Web Privacy (<https://cio.utexas.edu/policies/web-privacy>) | Web Accessibility Policy (<https://cio.utexas.edu/policies/web-accessibility>) | Adobe Reader (<https://get.adobe.com/reader/>)